

Specificatii

Tensiune nominala	12V	
Capacitate nominala (15min)	76W / Celula	
Dimensiuni	Lungime	181 ± 2mm
	Latime	77 ± 1mm
	Inaltime carcasa	167 ± 1mm
	Inaltime totala (cu borne)	167 ± 1mm
Greutate	Approx 5,7kg	
Tip Borna	T12	
Material carcasa	ABS	
Capacitate	18,0Ah / 0,9A	20Hr, 1,80V/cell, 25°C
	17,7Ah / 3,54A	5Hr, 1,75V/cell, 25°C
	15,36Ah / 5,12A	3Hr, 1,75V/cell, 25°C
	13,0Ah / 13,0A	1Hr, 1,6V/cell, 25°C
	76,4W / celula	15 min, 1,67V/cell, 25°C
Curent maxim de descarcare	270A (5s)	
Rezistenta interna	Approx 12mΩ	
Interval temp. de utilizare	Descarcare: -20 ÷ 50°C	
	Incarcare: -20 ÷ 50°C	
	Depozitare: -20 ÷ 50°C	
Temp. nominala de utilizare	25 ± 3°C	
Utilizare ciclica	Curent initial de incarcare: <5,4A. Tensiunea de incarcare: 14,50V ÷ 15,00V la 25°C. Coef. de corectie cu temp.: -30mV / °C	
Utilizare tampon (stand-by)	Curent initial de incarcare: <5,4A. Tensiunea de incarcare: 13,50V ÷ 13,80V la 25°C. Coef. de corectie cu temp.: -18mV / °C	
Influenta temperaturii asupra capacitatii	40°C	102%
	25°C	100%
	0°C	85%
Autodescercare la 25°C	1 luna	Capacitate remanenta: min. 97%
	3 luni	Capacitate remanenta: min. 91%
	6 luni	Capacitate remanenta: min. 82%
	12 luni	Capacitate remanenta: min. 64%

Gama FH / FH12-18



Utilizari si caracteristici

Tehnologie: VRLA-AGM

Surse neinteruptibile de tensiune (UPS)

Sisteme electrice de alimentare (EPS)

Sisteme de semnalizare aeriene si feroviare

Iluminat de siguranta

Statii de alimentare electrica

Sisteme de alarma si securitate

Surse de alimentare cu C.C.

EN 60896-21,-22

Durata de viata proiectata: 5 ani

Eurobat: Standard Comercial

Bateriile din gama FOTON FH pot fi stocate

pana la 6 luni la 25°C dupa care este

recomandata o incarcare de improspatare

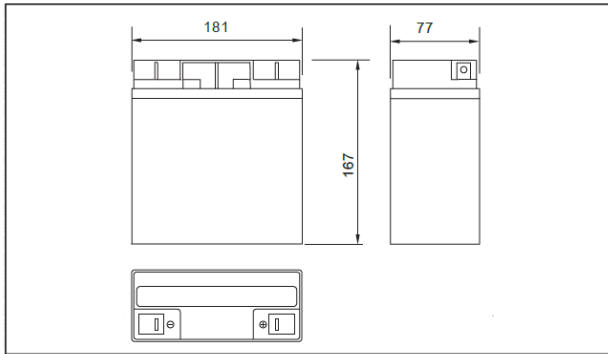
Descarcare cu curent constant (Amperi) la 25°C

Ufinal/Timp	5min	10min	15min	20min	30min	45min	60min	2h	3h	4h	5h
1.60V/cell	82.6	50.9	40.0	31.6	21.4	15.9	13.0	7.35	5.22	4.20	3.61
1.67V/cell	78.9	48.6	38.6	30.4	20.7	15.4	12.7	7.28	5.18	4.17	3.58
1.70V/cell	76.8	47.3	37.6	29.7	20.4	15.1	12.5	7.24	5.16	4.15	3.56
1.75V/cell	73.5	45.3	36.3	28.7	19.9	14.7	12.2	7.13	5.12	4.12	3.54
1.80V/cell	69.4	42.7	34.4	27.2	19.1	14.2	11.8	6.95	4.97	4.00	3.43

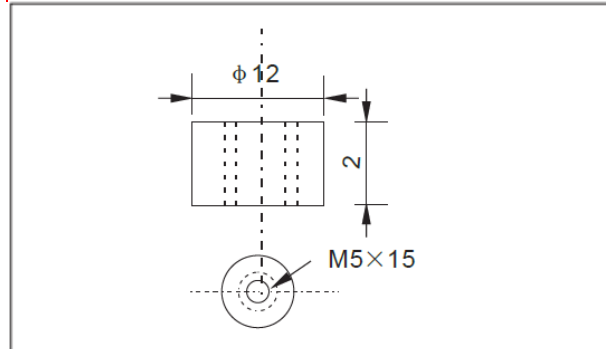
Descarcare cu putere constanta (Watts/bloc) la 25°C

Ufinal/Timp	5min	10min	15min	20min	30min	45min	60min	2h	3h	4h	5h
1.60V/cell	159	98.7	79.1	62.6	42.4	31.4	25.7	14.6	10.5	8.45	7.26
1.67V/cell	151	94.3	76.4	60.1	41.1	30.4	25.1	14.5	10.4	8.37	7.19
1.70V/cell	148	91.8	74.4	58.9	40.3	29.8	24.7	14.4	10.4	8.34	7.17
1.75V/cell	141	87.9	71.8	56.8	39.3	29.1	24.2	14.2	10.3	8.28	7.12
1.80V/cell	133	82.9	68.1	53.8	37.9	28.0	23.4	13.8	9.98	8.03	6.90

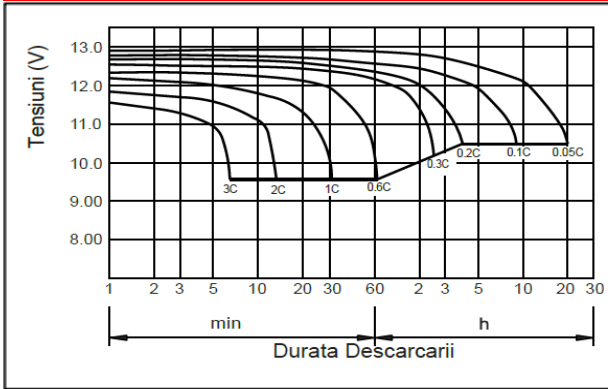
Dimensiuni exterioare (mm)



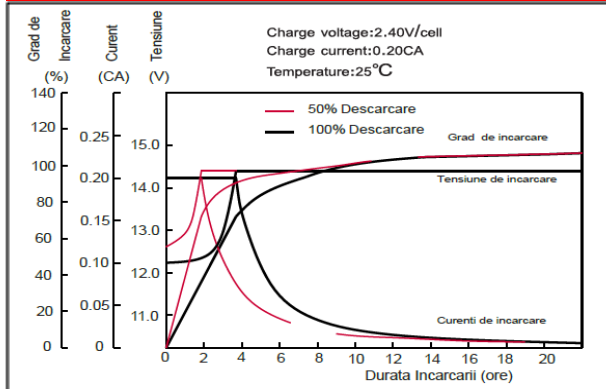
Tip Borna (mm)



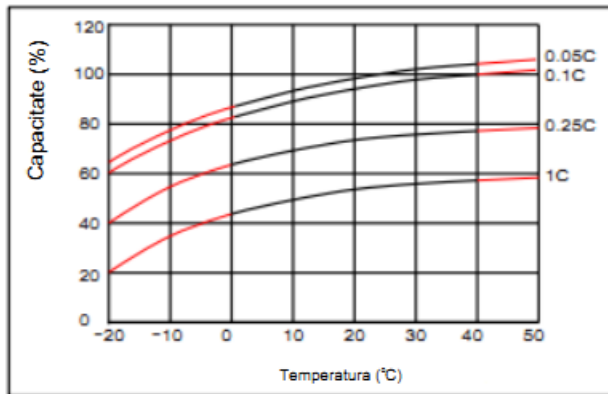
Caracteristici de descarcare (25°C)



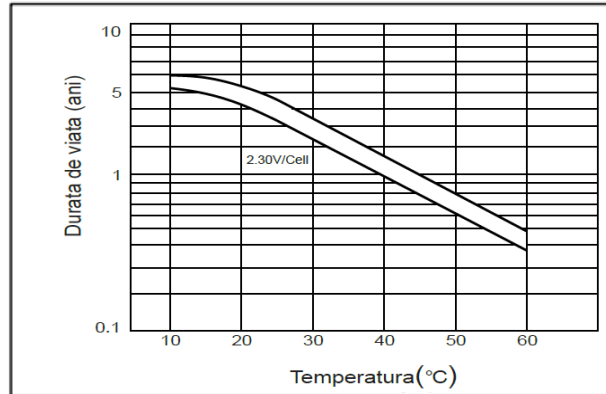
Caracteristici de incarcare (25°C)



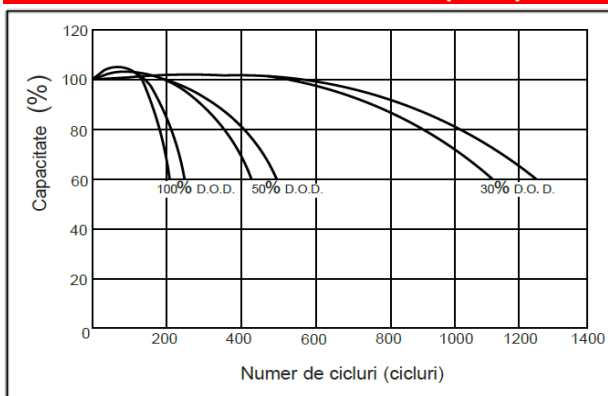
Efectul temperaturii asupra capacitatii



Durata de viata in functie de temperatura



Numar de cicluri vs D.O.D (25°C)



Relatia tensiune la borne / capacitate (25°C)

