

Specificatii

Tensiune nominala	12V	
Capacitate nominala (10h)	35Ah	
Dimensiuni	Lungime	195 ± 2mm
	Latime	130 ± 2mm
	Inaltime carcasa	155 ± 2mm
	Inaltime totala (cu borne)	167 ± 2mm
Greutate	Approx 10.50kg	
Tip Borna	T6/T14	
Material carcasa	ABS	
Capacitate	37.2Ah / 1.86A	20Hr, 1,80V/cell, 25°C
	35.0Ah / 3.50A	10Hr, 1,80V/cell, 25°C
	29.0Ah / 5.83A	5Hr, 1,80V/cell, 25°C
	25.68Ah / 8.56A	3Hr, 1,80V/cell, 25°C
Capacitate	19.0Ah / 19.68A	1Hr, 1,75V/cell, 25°C
	19.0Ah / 19.68A	1Hr, 1,75V/cell, 25°C
Curent maxim de descarcare	330A (5s)	
Rezistenta interna	Approx 11.0mΩ	
Interval temp. de utilizare	Descarcare: -20 ÷ 50°C	
	Incarcare: -20 ÷ 50°C Depozitare: -20 ÷ 50°C	
Temp. nominala de utilizare	25 ± 3°C	
Utilizare ciclica	Curent initial de incarcare: <10.5A. Tensiunea de incarcare: 14,50V ÷ 15,00V la 25°C. Coef. de corectie cu temp.: -30mV / °C	
Utilizare tampon (stand-by)	Curent initial de incarcare: <10.5A. Tensiunea de incarcare: 13,50V ÷ 13,80V la 25°C. Coef. de corectie cu temp.: -18mV / °C	
Influenta temperaturii asupra capacitatii	40°C	102%
	25°C	100%
	0°C	85%
Autodescarcare la 25°C	1 luna	Capacitate remanenta: min. 97%
	3 luni	Capacitate remanenta: min. 91%
	6 luni	Capacitate remanenta: min. 82%
	12 luni	Capacitate remanenta: min. 64%

Gama FL / FL12-35



Utilizari si caracteristici

Tehnologie: VRLA - AGM

- Surse neinteruptibile de tensiune (UPS)
- Sisteme electrice de alimentare (EPS)
- Sisteme de semnalizare aeriene si feroviare
- Iluminat de siguranta
- Centrale electrice
- Sisteme de alarma si securitate
- Surse de alimentare cu C.C.
- EN 60896-21,-22
- Durata de viata proiectata: 10-12 ani
- Eurobat: Standard Comercial
- Bateriile din gama FOTON FL pot fi stocate pana la 6 luni la 25°C dupa care este recomandata o incarcare de improspatare

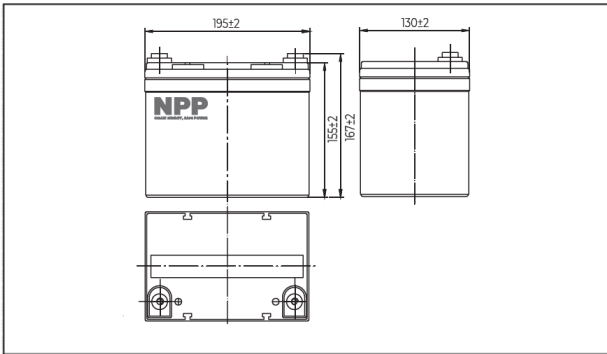
Descarcare cu curent constant (Amperi) la 25°C

Ufinal/Timp	10min	15min	30min	60min	2h	3h	4h	5h	8h	10h	20h
9.60V	74.49	57.39	34.4	21.13	12.54	8.99	7.18	6.13	4.22	3.54	1.89
9.90V	72.31	56.05	33.67	20.82	12.43	8.94	7.14	6.10	4.20	3.53	1.89
10.2V	69.31	53.98	32.63	20.31	12.33	8.88	7.10	6.06	4.16	3.52	1.88
10.5V	66.30	52.11	31.81	19.68	12.12	8.82	7.04	6.02	4.13	3.51	1.87
10.8V	62.57	49.42	30.67	19.06	11.81	8.56	6.83	5.83	4.01	3.50	1.86

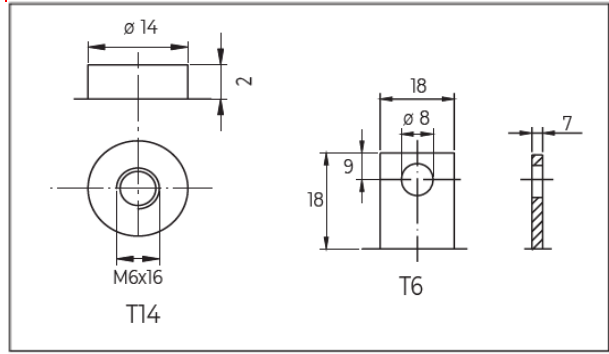
Descarcare cu putere constanta (Watts/bloc) la 25°C

Ufinal/Timp	10min	15min	30min	60min	2h	3h	4h	5h	8h	10h	20h
9.60V	804.97	630.92	385.39	240.35	145.04	105.67	84.43	72.52	50.14	41.54	22.17
9.90V	781.14	615.38	378.14	237.24	144.00	105.67	84.02	72.11	49.83	41.44	22.07
10.2V	749.03	592.59	366.74	231.03	142.97	104.64	83.40	71.59	49.52	41.34	22.07
10.5V	715.88	572.91	357.42	223.78	140.90	103.60	82.78	71.17	49.11	41.13	21.86
10.8V	676.51	542.86	343.95	216.52	136.75	100.60	80.29	69.00	47.66	40.82	21.76

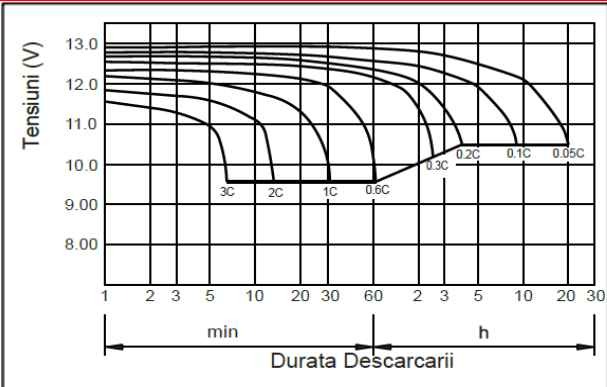
Dimensiuni exterioare (mm)



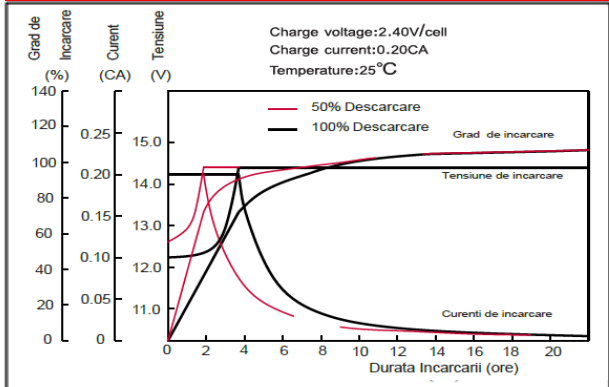
Tip Borna (mm)



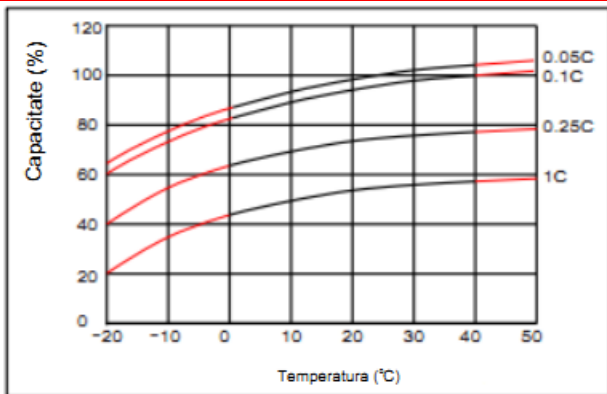
Caracteristici de descarcare (25°C)



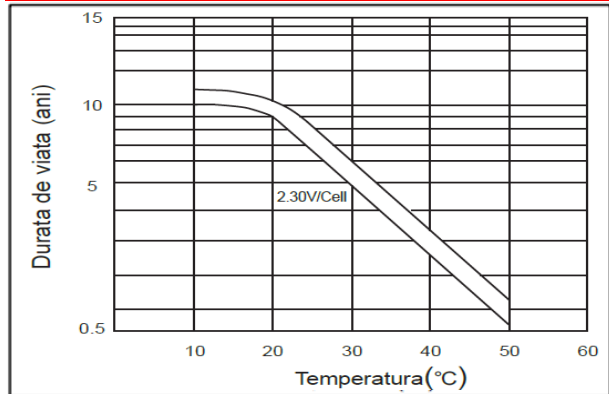
Caracteristici de incarcare (25°C)



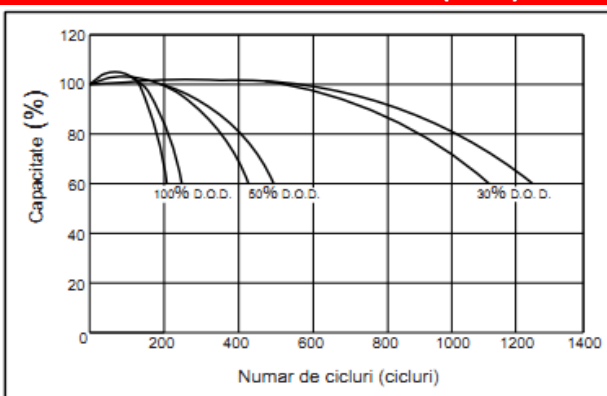
Efectul temperaturii asupra capacitatii



Durata de viata in functie de temperatura



Numar de cicluri vs D.O.D (25°C)



Relatia tensiune la borne / capacitate (25°C)

