

## Specificatii

Tensiune nominala	12V	
Capacitate nominala (15min)	390W / Celula	
Dimensiuni	Lungime	330 ± 2mm
	Latime	171 ± 1mm
	Inaltime carcasa	214 ± 1mm
	Inaltime totala (cu borne)	220 ± 1mm
Greutate	Approx 32,7kg	
Tip Borna	T16	
Material carcasa	ABS	
Capacitate	100Ah / 5A	20Hr, 1,80V/cell, 25°C
	94,5Ah / 18,9A	5Hr, 1,75V/cell, 25°C
	81Ah / 27A	3Hr, 1,75V/cell, 25°C
	71,8Ah / 71,8A	1Hr, 1,6V/cell, 25°C
Curent maxim de descarcare	800A (5s)	
Rezistenta interna	Approx 4mΩ	
Interval temp. de utilizare	Descarcare: -15 ÷ 50°C	
	Incarcare: -10 ÷ 50°C Depozitare: -20 ÷ 50°C	
Temp. nominala de utilizare	25 ± 3°C	
Utilizare ciclica	Curent initial de incarcare: <20A. Tensiunea de incarcare: 14,7V ÷ 0.2V la 25°C. Coef. de corectie cu temp.: -30mV / °C	
Utilizare tampon (stand-by)	Curent initial de incarcare: <20A. Tensiunea de incarcare: 13,6V ÷ 0.2V la 25°C. Coef. de corectie cu temp.: -18mV / °C	
Influenta temperaturii asupra capacitatii	40°C	102%
	25°C	100%
	0°C	85%
Autodescercare la 25°C	3 luni	Capacitate remanenta: 91%
	6 luni	Capacitate remanenta: 82%
	12 luni	Capacitate remanenta: 65%

## Gama FH / FH12-100



## Utilizari si caracteristici

Tehnologie: VRLA - AGM

Surse neinteruptibile de tensiune (UPS)

Sisteme electrice de alimentare (EPS)

Sisteme de semnalizare aeriene si feroviare

Iluminat de siguranta

Statii de alimentare electrica

Sisteme de alarma si securitate

Surse de alimentare cu C.C.

EN 60896-21,-22

Durata de viata proiectata: 5 ani

Eurobat: Standard Comercial

Bateriile din gama FOTON FH pot fi stocate

pana la 6 luni la 25°C dupa care este

recomandata o incarcare de improspatare

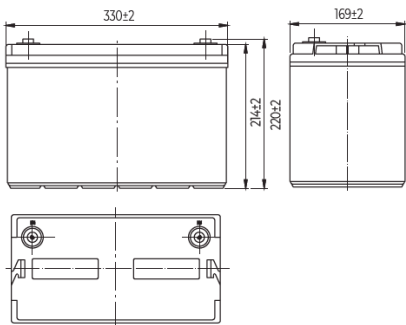
## Descarcare cu curent constant (Amperi) la 25°C

F.V/Time	10min	15min	20min	30min	45min	60min	2h	3h	4h	5h	6h
1.60V/cell	302.94	216.38	180.63	132.48	95.18	71.80	38.40	27.50	22.20	19.30	16.50
1.67V/cell	288.68	210.14	173.06	127.99	92.15	70.00	38.00	27.30	22.00	19.10	16.30
1.70V/cell	281.56	203.90	169.81	125.74	90.42	68.90	37.80	27.20	21.90	19.00	16.30
1.75V/cell	269.68	196.62	163.32	123.50	88.26	67.60	37.20	27.00	21.70	18.90	16.20
1.80V/cell	254.23	186.21	154.67	117.88	85.01	65.50	36.30	26.20	21.10	18.30	15.70

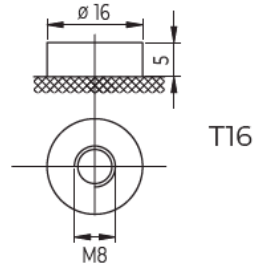
## Descarcare cu putere constanta (Watts) la 25°C

F.V/Time	10min	15min	20min	30min	45min	60min	2h	3h	4h	5h	6h
1.60V/cell	527.91	410.04	341.61	251.28	183.86	139.00	74.80	54.20	43.70	38.20	32.70
1.67V/cell	503.66	390.00	327.82	243.56	177.37	135.00	74.20	53.70	43.30	37.80	32.40
1.70V/cell	490.43	385.56	321.45	239.16	174.12	133.00	73.70	53.50	43.10	37.70	32.20
1.75V/cell	469.49	372.30	309.78	232.54	169.80	130.00	72.60	53.20	42.80	37.40	32.00
1.80V/cell	443.04	352.92	293.87	224.83	164.39	126.00	70.80	51.60	41.50	36.30	31.10

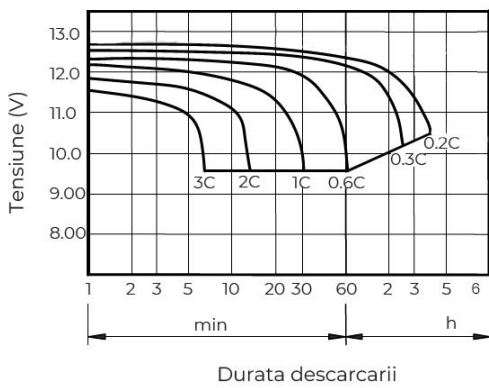
### Dimensiuni exterioare (mm)



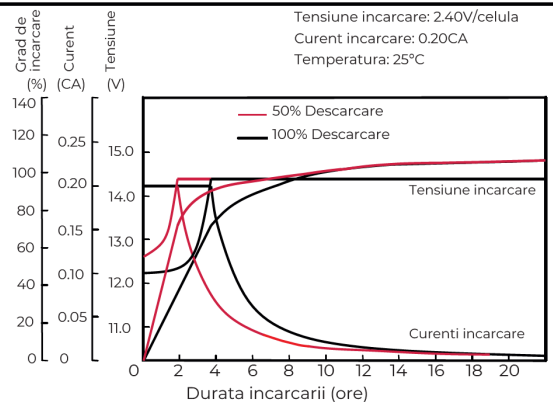
### Tip Borna (mm)



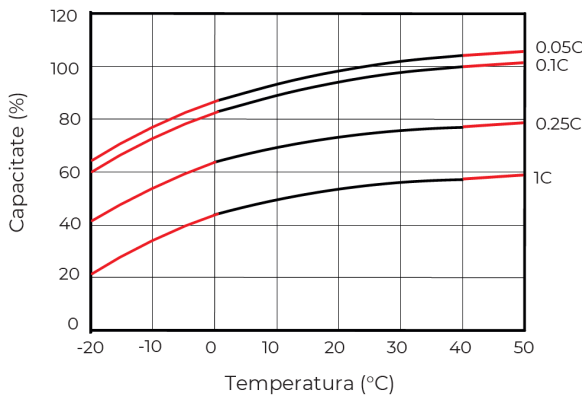
### Caracteristici de descarcare (25°C)



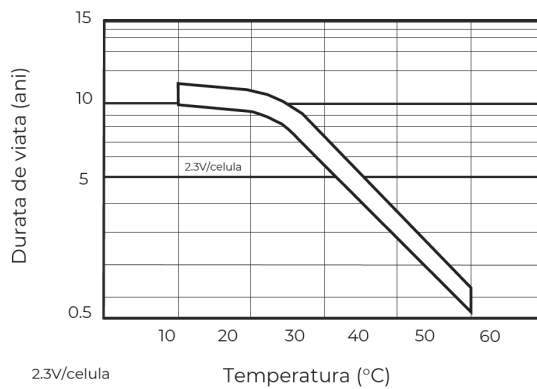
### Caracteristici de incarcare (25°C)



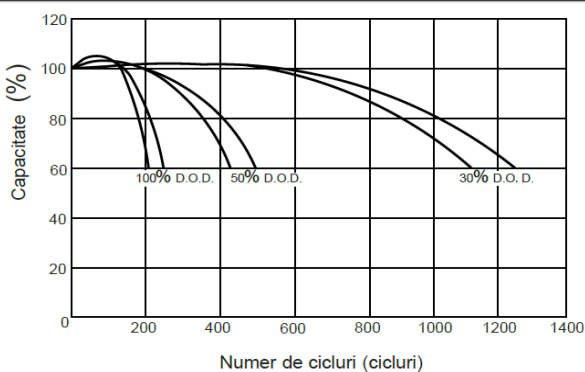
### Efectul temperaturii asupra capacitatii



### Durata de viata in functie de temperatura



### Numar de cicluri vs D.O.D (25°C)



### Relatia tensiune la borne / temperatura

